

**BUGS (Hemiptera)**

FW thickened at base and membranous at tip, the tips overlapping at rest; antennae 4- or 5-segmented; mouth parts in the form of a sucking beak.

**SCENTLESS PLANT BUGS, Family Rhopalidae** p. 122

Elongate to oval, fairly hard-bodied; ocelli *present*; membrane of FW with *many veins*; head narrower than pronotum; 14 mm. or less.

BOXELDER BUG, *Leptocoris trivittatus* (Say); U.S.

**LEAF or PLANT BUGS, Family Miridae** p. 118

Small, soft-bodied, oval or elongate; FW with a *cuneus* and membrane with *2 closed cells*; ocelli *absent*.

FOUR-LINED PLANT BUG, *Poecilocapsus lineatus* (Fabricius); N. America.

**AMBUSH BUGS, Family Phymatidae** p. 118

Abdomen *wider toward rear*, and extending on sides beyond wings; front femora *much thickened*; beak short, 3-segmented; antennae *4-segmented*, last segment *swollen*.

*Phymata fasciata* (Gray); e. U.S., N.J. to Ariz., Texas.

**SEED BUGS, Family Lygaeidae** p. 122

Elongate to oval, fairly hard-bodied; membrane of FW with *4 or 5 veins*; ocelli nearly always *present*.

SMALL MILKWEED BUG, *Lygaeus kalmii* Stål; N. America.

**STINK BUGS, Family Pentatomidae** p. 126

*Shield-shaped* bugs; antennae *5-segmented*; scutellum *large and triangular*, not longer than corium, and not reaching tip of abdomen; tibiae without strong spines.

SOUTHERN GREEN STINK BUG, *Nezara viridula* (Linn); se. U.S.

HARLEQUIN BUG, *Murgantia histrionica* (Hahn); U.S.

**RED BUGS or STAINERS, Family Pyrrhocoridae** p. 122

Usually brightly colored with red and black; similar to seed bugs but ocelli *lacking* and *more veins* in FW membrane.

COTTON STAINER, *Dysdercus suturellus* (Herrich-Schäffer); se. U.S., S. Carolina to Alabama.

**ASSASSIN BUGS, Family Reduviidae** p. 119

Head *elongate*, with a transverse groove between eyes; beak short, 3-segmented, its tip fitting into a groove in prosternum.

BLOODSUCKING CONENOSE, *Triatoma sanguisuga* (LeConte); Md. and N.J. to Florida, Illinois, Texas.

**LEAF-FOOTED BUGS, Family Coreidae** p. 122

Similar to seed bugs but with *many veins* in membrane of FW; usually dark-colored and over 10 mm.

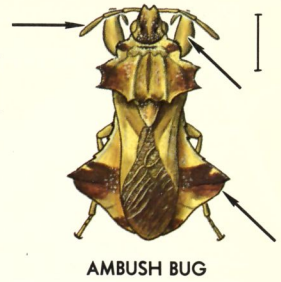
SQUASH BUG, *Anasa tristis* (De Geer); N. America.



BOXELDER BUG



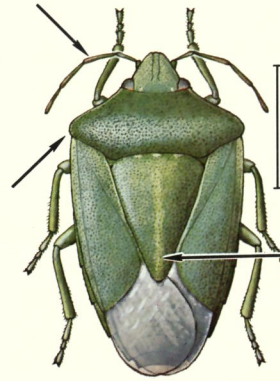
FOUR-LINED PLANT BUG



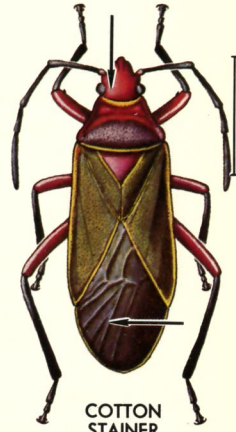
AMBUSH BUG



SMALL MILKWEED BUG



SOUTHERN GREEN STINK BUG



COTTON STAINER



BLOODSUCKING CONENOSE



HARLEQUIN BUG



SQUASH BUG